

For Lease



WESTERN STATES
COMMERCIAL REAL ESTATE

Available Retail Space in Raton

1239 – 1265 S. 2nd St. | Raton, NM 87740

Available Space for Lease in Established Center

Aerial



Available Space for Lease in Established Center

Aerial



Available Space for Lease in Established Center

Property Overview

Property Summary

Space Available	± 950 SF - ± 9,000 SF
Lease Type	NNN
Lot Size	6.7 Acres
Zoning	C-2

Property Highlights

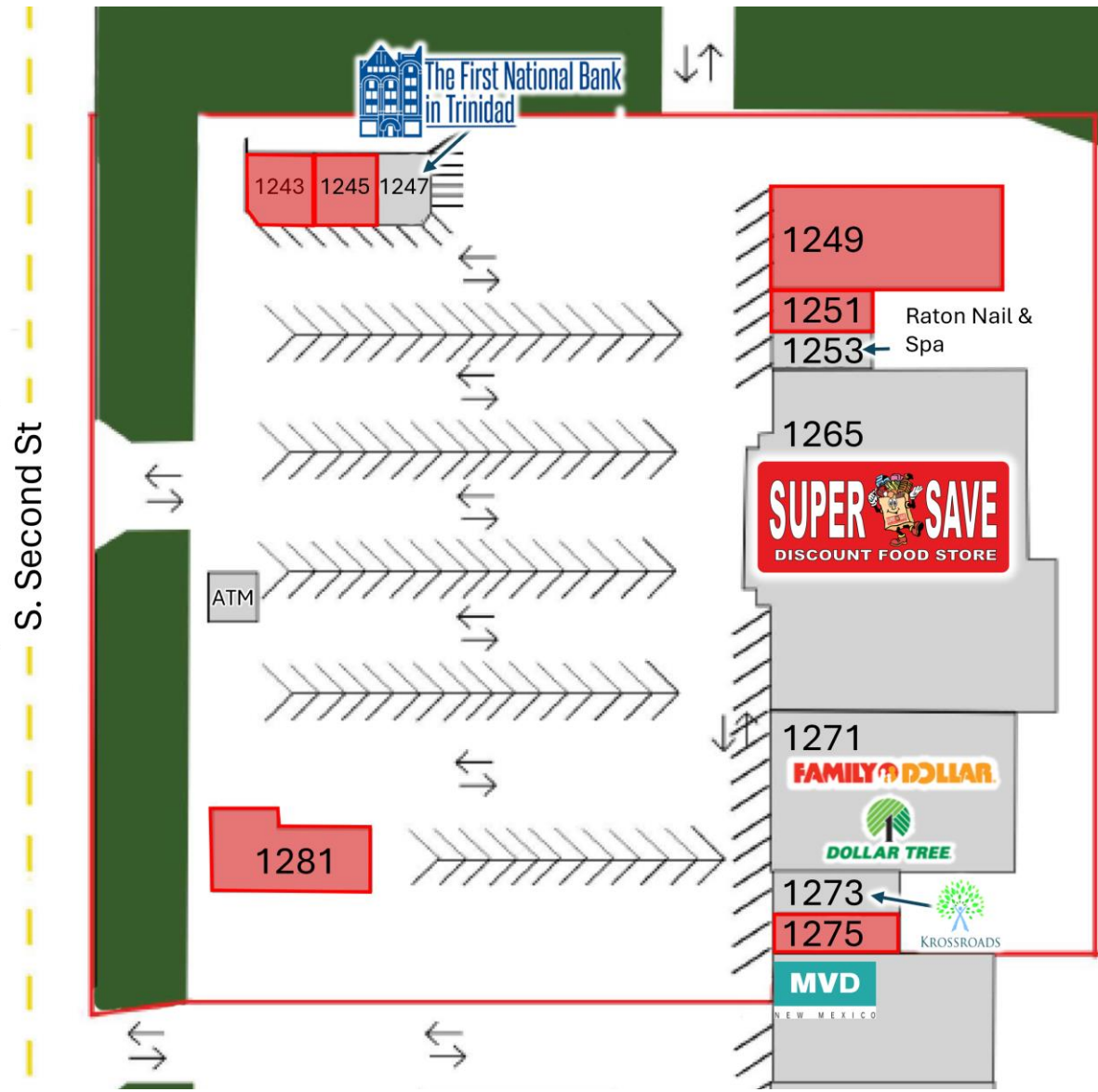
- Proposed 12 Tesla Super Charger Stations
- Prominent Pylon Signage With Strong Visibility
- Excellent Parking
- Great Co-tenancy Including Super Save Discount Food Store, Dollar Tree, Family Dollar, And First National Bank
- Property Features A Lighted Full Access Point
- Available Freestanding Restaurant With Full Kitchen, Dining Area, And Dedicated Pylon Signage



Available Space for Lease in Established Center

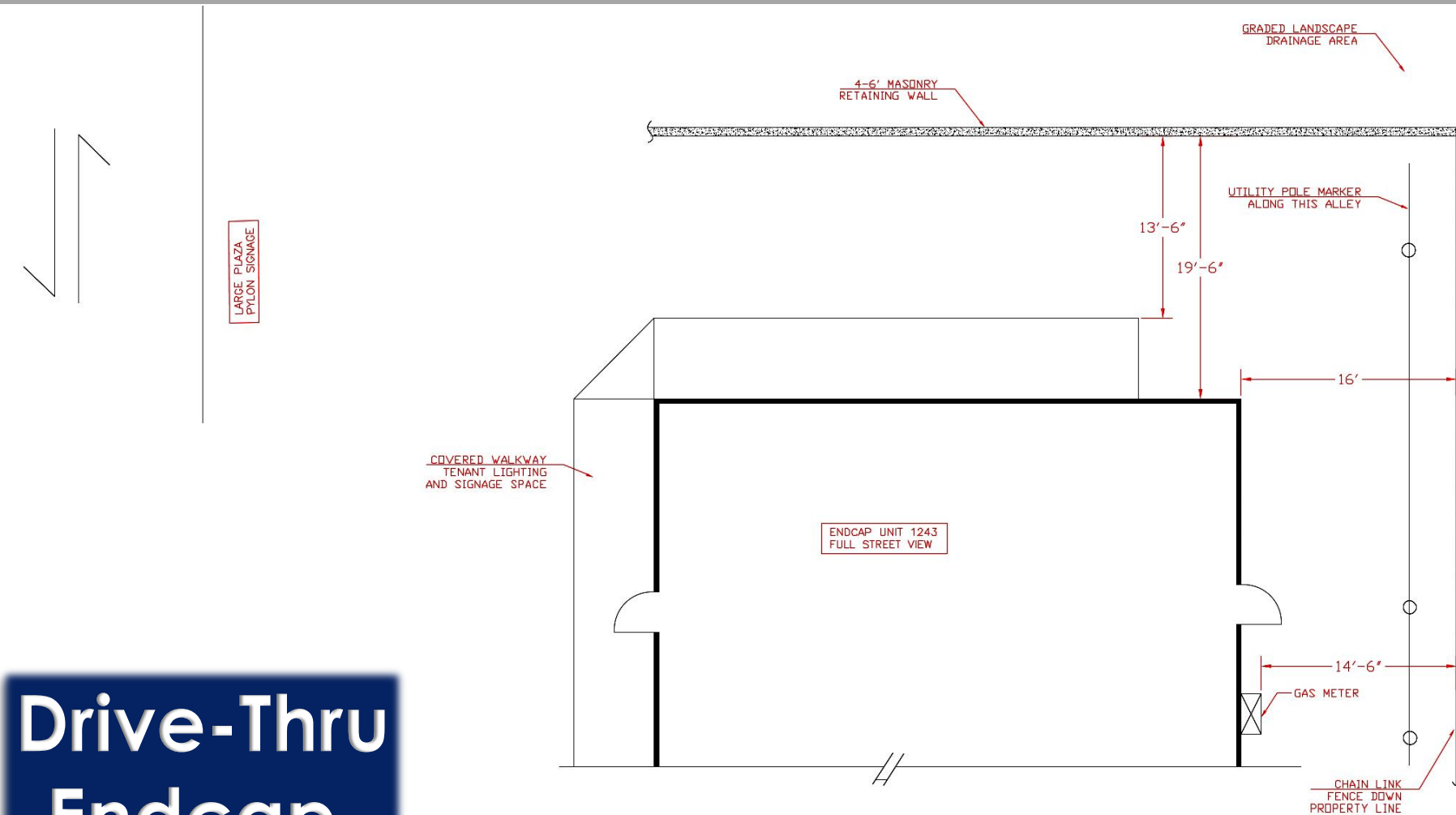
Available Spaces

Suite	SF	Lease Type	PSF
1243	2,900 SF	NNN	See Broker
1245	1,300 SF	NNN	\$13.00
1249	9,000 SF	NNN	\$10.00
1251	2,000 SF	NNN	\$13.00
1275	950 SF	NNN	\$12.00
Pad Site 1281	3,200 SF	NNN	See Broker



Available Space for Lease in Established Center

Suite 1243

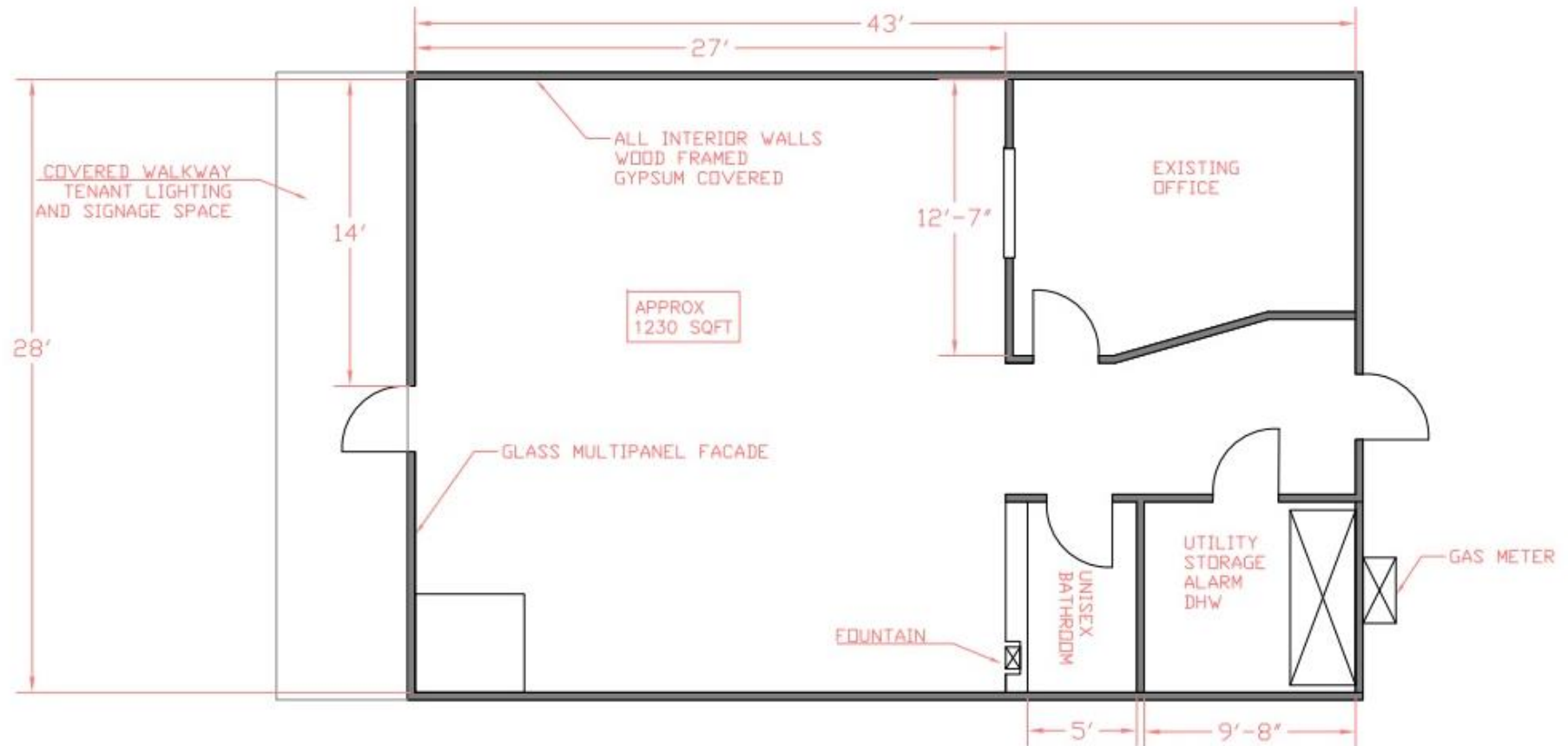


**Drive-Thru
Endcap**

DONA ANA PLAZA		
1243/DRIVE THRU		
SOUTH 2ND ST		
RATON NM 87740		
SIZE	FSC# NO.	DWG NO.
SCALE	NTS	SHEET

Available Space for Lease in Established Center

Suite 1245



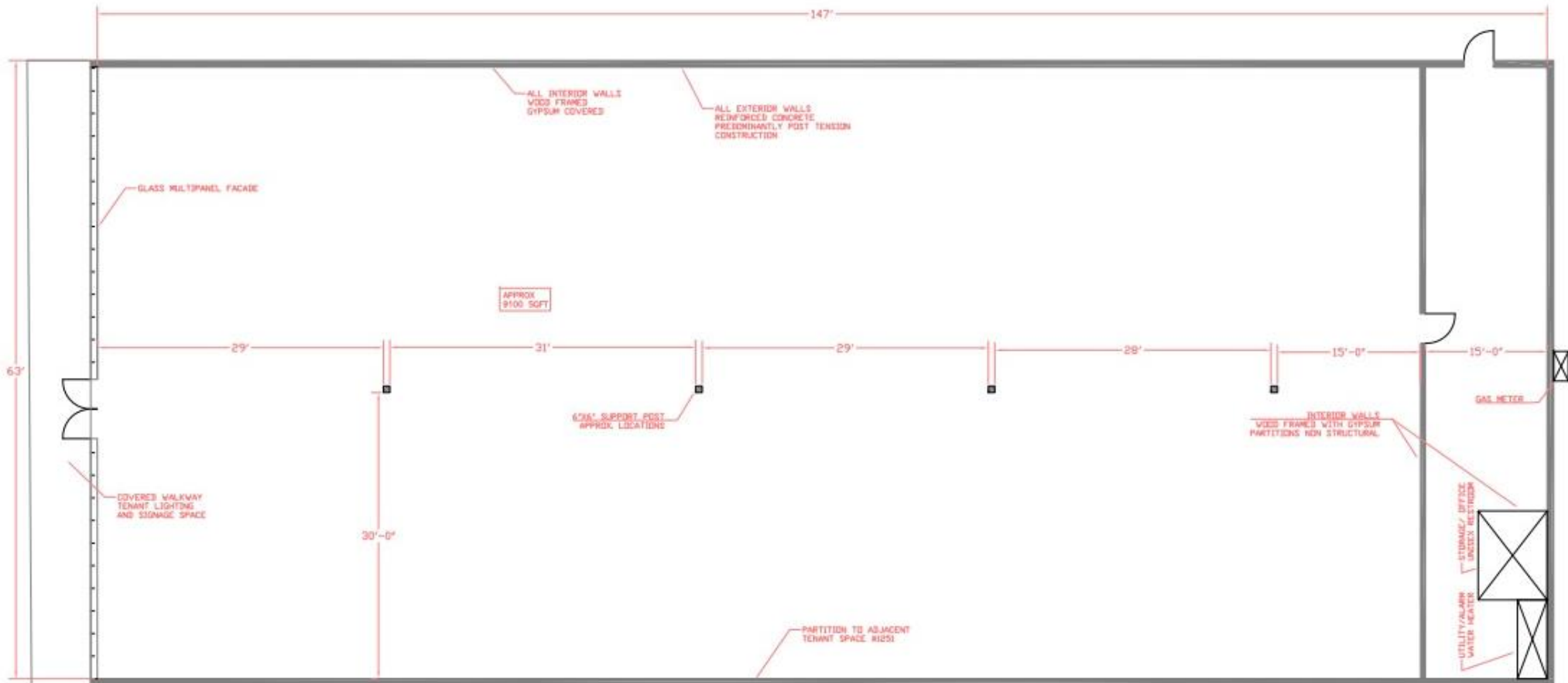
GENERAL NOTES:

- FLOORING CONSISTS OF COMMERCIAL CARPET OVERLAY ON CONCRETE SLAB
- DROP CEILING OF 2'X4' ACOUSTIC TILE
- RECESSED FLUORESCENT LIGHTING
- FLUSH MOUNT HVAC REGISTERS
- TENANT CONTROLLED WALL MOUNTED TSTAT.
- ALL DIMENSIONS ARE APPROXIMATE AND MUST BE FIELD VERIFIED BY TENANT AND CONTRACTORS.

DONA ANA PLAZA		
1245 SOUTH 2ND ST		
RATON NM 87740		
DATE	PRICE NO.	REV NO.
SCALE	NTS	SHEET 01

Available Space for Lease in Established Center

Suite 1249



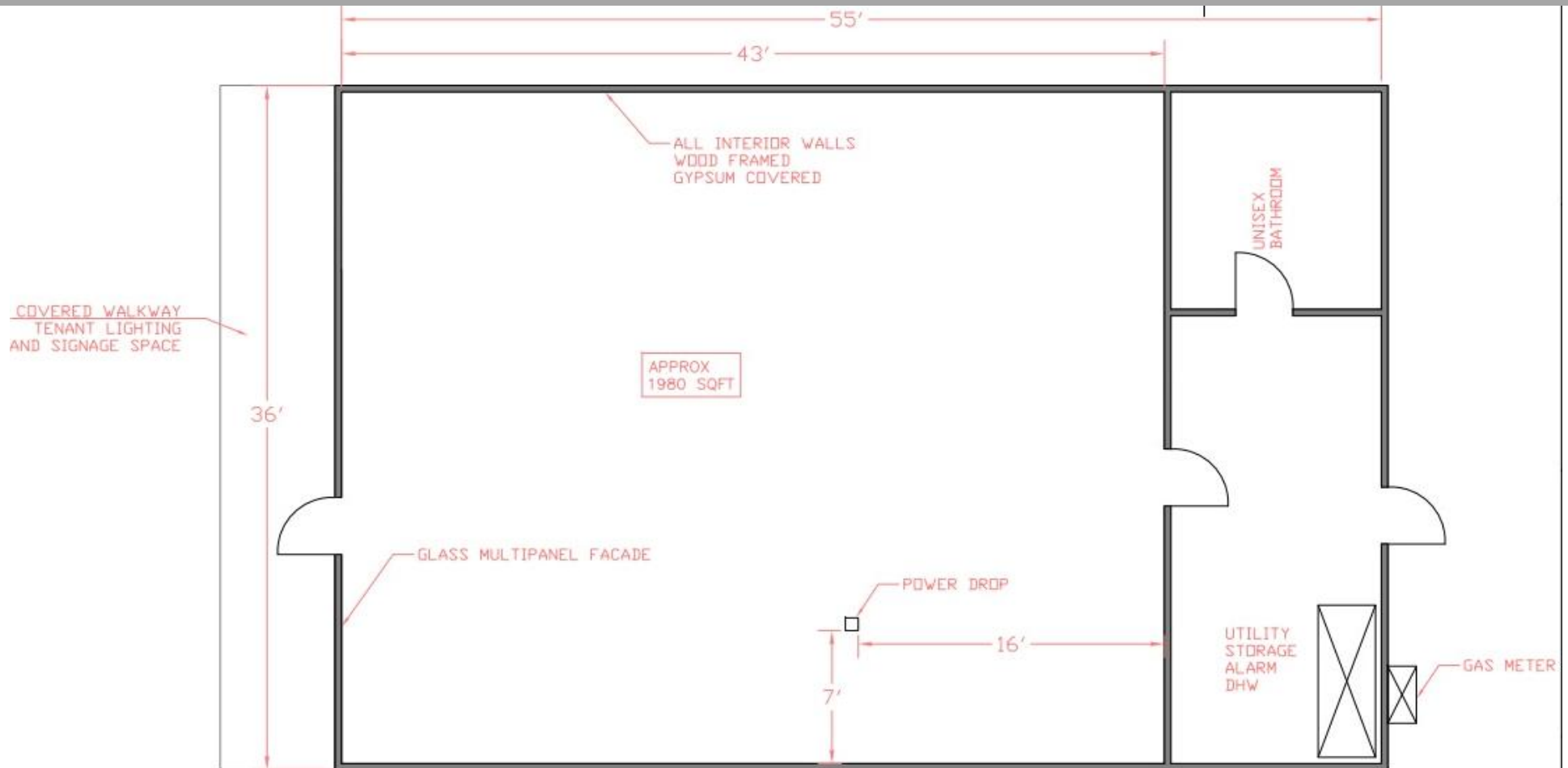
GENERAL NOTES:

- FLOORING CONSISTS OF VCT OVERLAY ON CONCRETE SLAB
- DROP CEILING OF 2'X4' ACOUSTIC TILE
- SURFACE MOUNT FLUORESCENT LIGHTING
- FLUSH MOUNT HVAC REGISTERS
- DROP DOWN DOME SECURITY CAMERAS THROUGHOUT
- FOUR TSTATS WALL MOUNTED @ APPROX. 6'-0" HEIGHT
- ALL DIMENSIONS ARE APPROXIMATE AND MUST BE FIELD VERIFIED BY TENANT AND CONTRACTORS

		DONA ANA PLAZA	
		1249 SOUTH 2ND ST RATON NM 87740	
REV	FROM NO.	DATE	BY
			0
SCALE		NTS	SHEET 01

Available Space for Lease in Established Center

Suite 1251



APPROX
1980 SQFT

GENERAL NOTES:

- FLOORING CONSISTS OF COMMERCIAL CARPET OVERLAY ON CONCRETE SLAB
- DROP CEILING OF 2'X4' ACOUSTIC TILE
- RECESSED FLUORESCENT LIGHTING
- FLUSH MOUNT HVAC REGISTERS
- TENANT CONTROLLED WALL MOUNTED TSTAT.
- ALL DIMENSIONS ARE APPROXIMATE AND MUST BE FIELD VERIFIED BY TENANT AND CONTRACTORS.

DONA ANA PLAZA			
1251 SOUTH 2ND ST			
RATON NM 87740			
DATE	ISSUE NO.	REV. NO.	REV.
			0
SCALE		SHEET D1	



Suite 1249



Suite 1243 & 1245



Suite 1245



Pad Site



Suite 1251



Pad Site



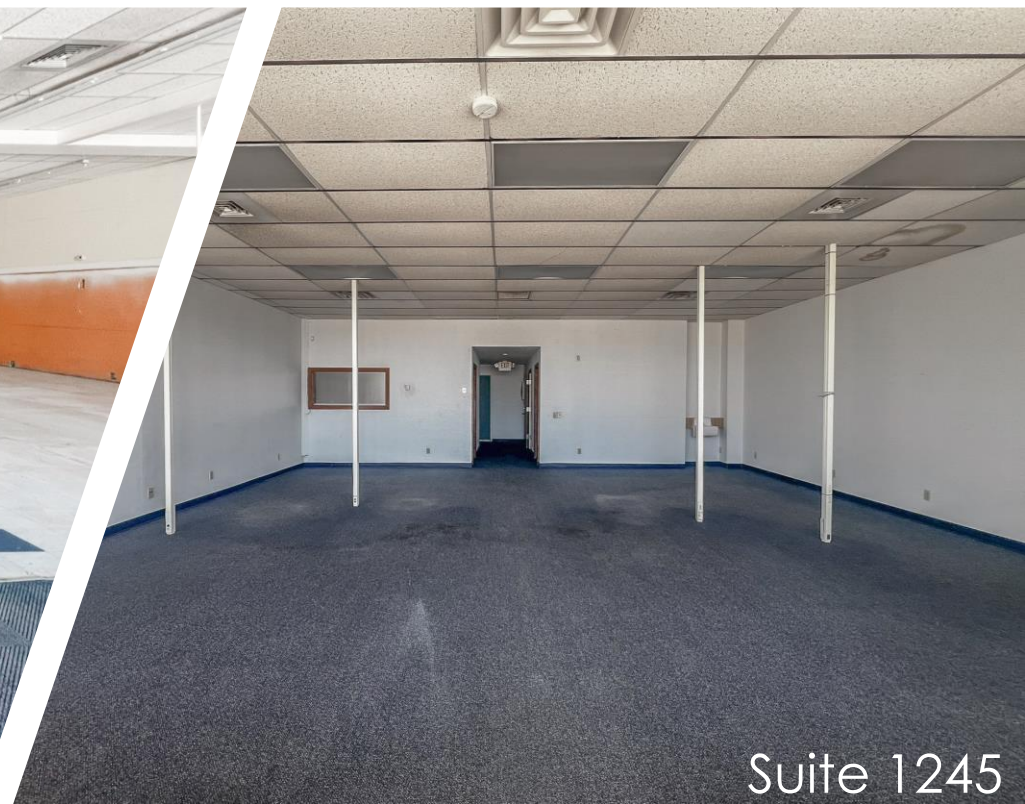
Suite 1249



Suite 1251



Suite 1249



Suite 1245

Available Space for Lease in Established Center

Demographics

Raton, NM

Place in: Colfax County, NM, New Mexico, United States

6,046 Population

8 square miles

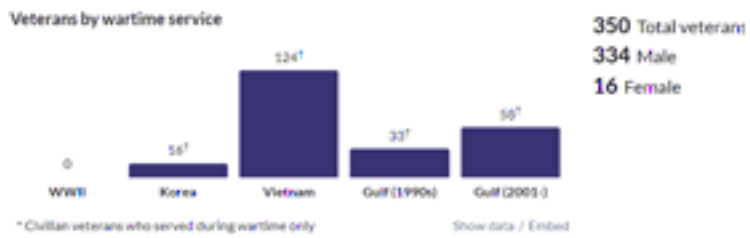
759.5 people per square mile

Census data: ACS 2022 5-year unless noted

7%
Population with veteran status

about three-quarters of the rate in Colfax County: 9.5%[†]

about 80 percent of the rate in New Mexico: 8.4%



90.2%
High school grad or higher

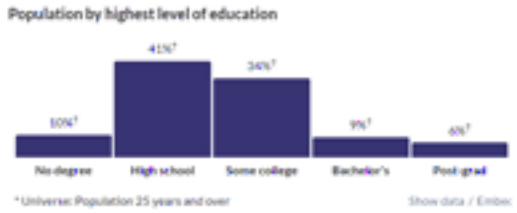
about the same as the rate in Colfax County: 90.5%

a little higher than the rate in New Mexico: 87.1%

15.1%
Bachelor's degree or higher

about two-thirds of the rate in Colfax County: 22.1%[†]

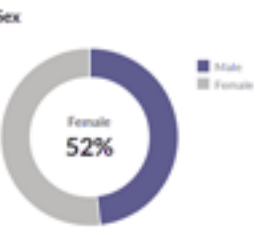
about half the rate in New Mexico: 29.1%



44.4
Median age

about 90 percent of the figure in Colfax County: 49.2

about 20 percent higher than the figure in New Mexico: 38.6



2,843
Number of households

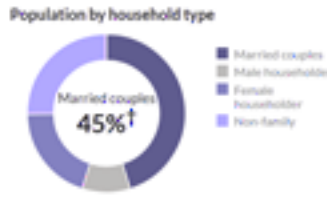
Colfax County: 5,549

New Mexico: 812,852

2.1
Persons per household

a little less than the figure in Colfax County: 2.1

about 80 percent of the figure in New Mexico: 2.6



\$25,679
Per capita income

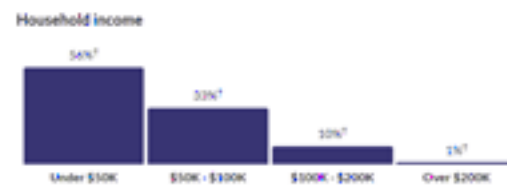
about 90 percent of the amount in Colfax County: \$28,275

about 80 percent of the amount in New Mexico: \$32,667

\$40,899
Median household income

about 90 percent of the amount in Colfax County: \$45,286[†]

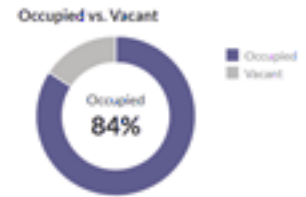
about two-thirds of the amount in New Mexico: \$58,722



3,377
Number of housing units

Colfax County: 9,554

New Mexico: 943,149



WESTERN STATES

COMMERCIAL REAL ESTATE

Pricing subject to change without notice. The information contained is believed reliable. While we do not doubt the accuracy, we have not verified it and make no guarantee, warranty or representation about it. It is your responsibility to independently confirm its accuracy and completeness. Any projection, opinion, assumption or estimated uses are for example only and do not represent the current or future performance of the property. The value of this transaction to you depends on many factors which should be evaluated by your tax, financial, and legal counsel. You and your counsel should conduct a careful independent investigation of the property to determine that it is suitable to your needs.