

For Lease



Previous Facade

WESTERN STATES
COMMERCIAL REAL ESTATE

Standalone QSR with Drive-Thru

601 Silkey Way | Espanola, NM 87532

505-585-5700 | 315 Alameda Blvd NE, Suite F | Albuquerque, NM | ws-cre.com

Standalone QSR w/ Drive-Thru

601 Silkey Way | Espanola, NM



Previous Facade

PROPERTY SUMMARY

Lease Rate:	\$ /yr NNN
NNN:	+/- \$ /SF
Available SF:	1,200 SF
Lot Size:	0.66 Acres

PROPERTY HIGHLIGHTS

- Building completed in 2018
- Fast food build-out with drive-thru
- FF&E included
- Pylon signage with high visibility on N. Riverside Dr.
- Strong traffic count of almost 20,000 cars per day on N. Riverside Dr.
- Ample parking

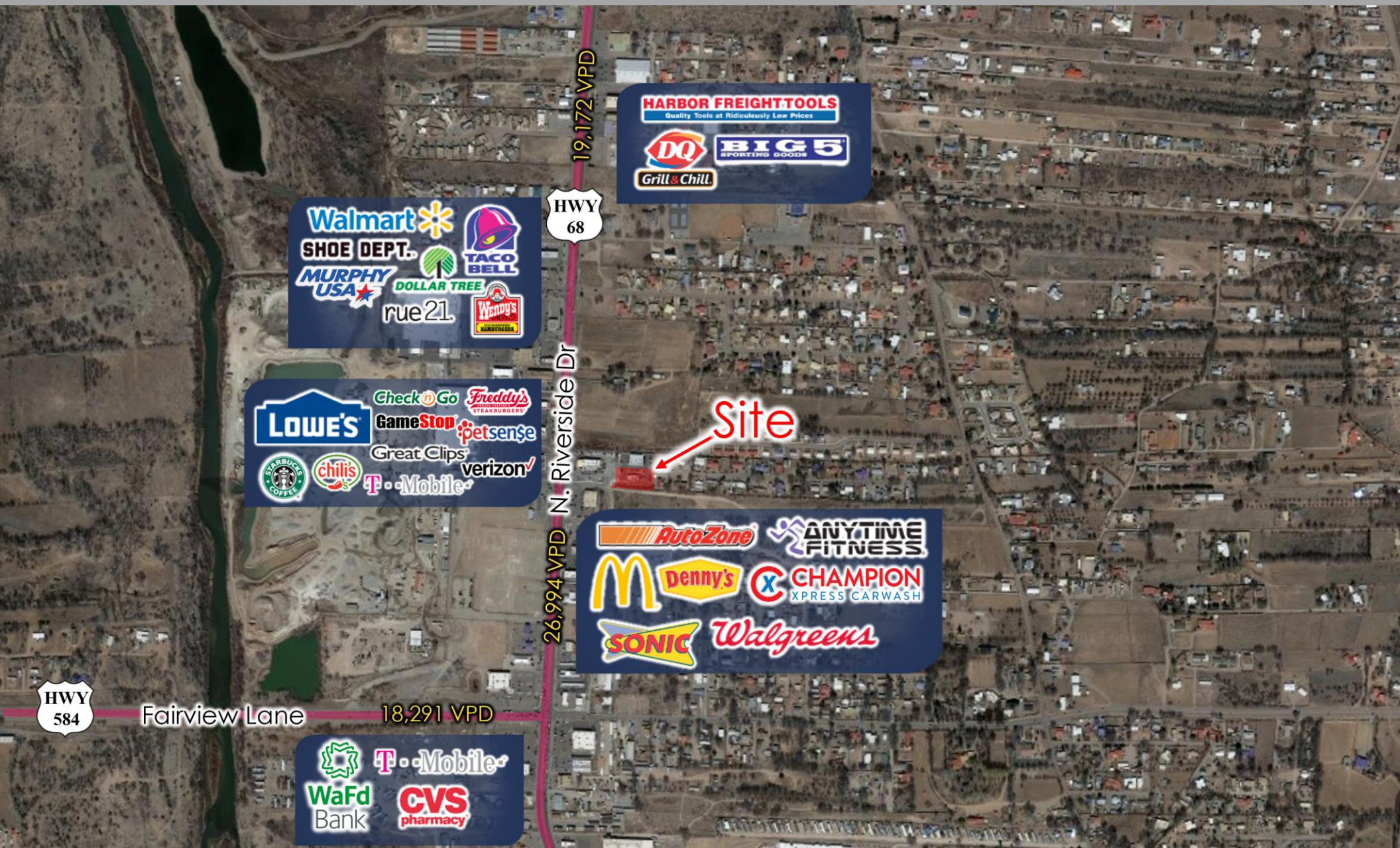


Previous Facade

Standalone QSR w/ Drive-Thru

Aerial

601 Silkey Way | Espanola, NM



Standalone QSR w/ Drive-Thru

Aerial

601 Silkey Way | Espanola, NM



Standalone QSR w/ Drive-Thru

Aerial

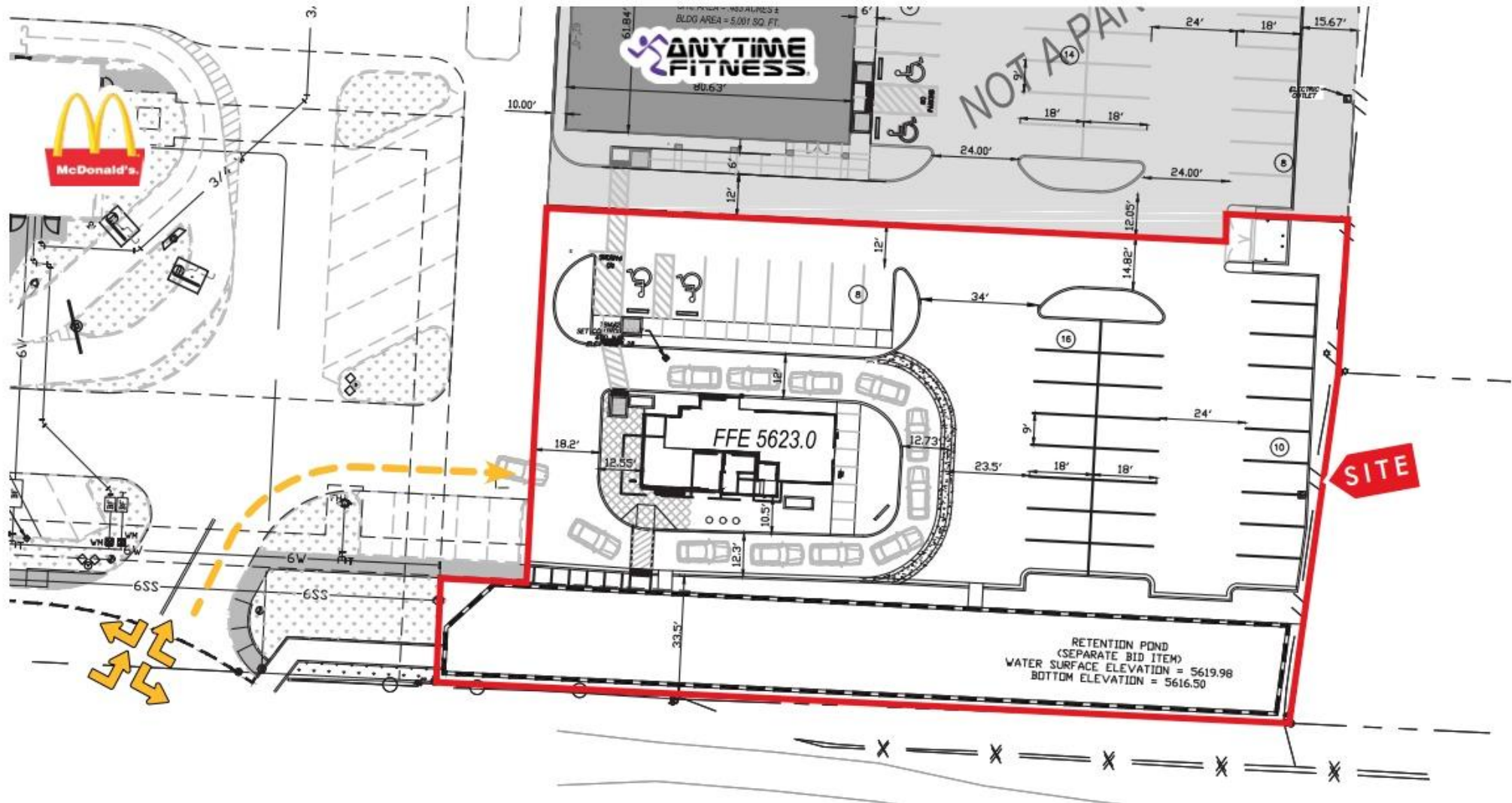
601 Silkey Way | Espanola, NM



Standalone QSR w/ Drive-Thru

Site Plan

601 Silkey Way | Espanola, NM





Standalone QSR w/ Drive-Thru

Demographics

601 Silkey Way | Espanola, NM

CITY, STATE

Espanola, NM

POPULATION

15,267

AVG. HH SIZE

2.58

MEDIAN HH INCOME

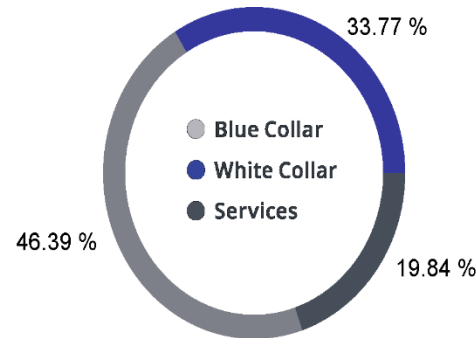
\$39,664

HOME OWNERSHIP

Renters: **1,684**

Owners: **4,187**

EMPLOYMENT



34.93 %
Employed

1.68 %
Unemployed

EDUCATION

High School Grad: **25.46 %**

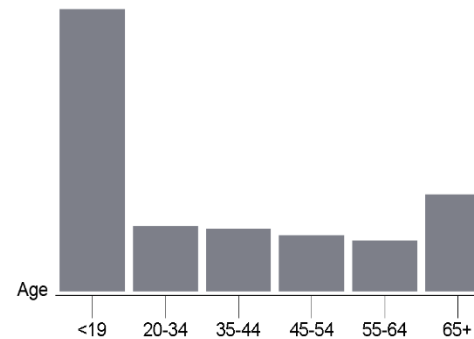
Some College: **22.22 %**

Associates: **6.25 %**

Bachelors: **33.13 %**

GENDER & AGE

48.49 %   **51.51 %**



RACE & ETHNICITY

White: **25.27 %**

Asian: **0.10 %**

Native American: **5.04 %**

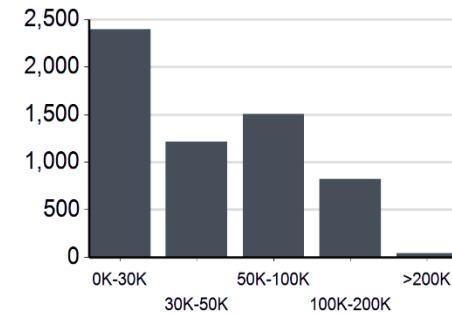
Pacific Islanders: **0.00 %**

African-American: **0.02 %**

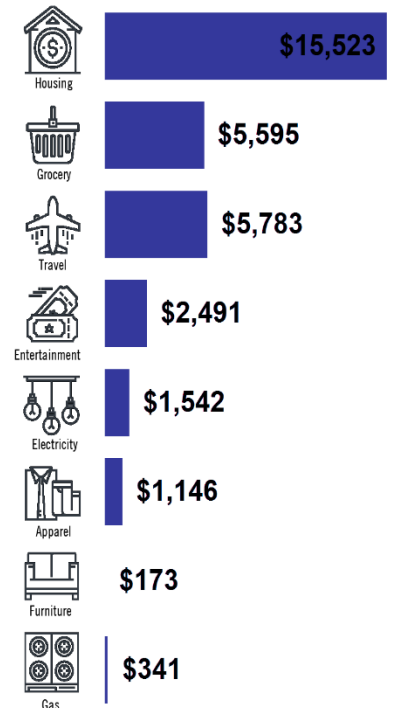
Hispanic: **46.12 %**

Two or More Races: **23.45 %**

INCOME BY HOUSEHOLD



HH SPENDING



WESTERN STATES

COMMERCIAL REAL ESTATE

Pricing subject to change without notice. The information contained is believed reliable. While we do not doubt the accuracy, we have not verified it and make no guarantee, warranty or representation about it. It is your responsibility to independently confirm its accuracy and completeness. Any projection, opinion, assumption or estimated uses are for example only and do not represent the current or future performance of the property. The value of this transaction to you depends on many factors which should be evaluated by your tax, financial, and legal counsel. You and your counsel should conduct a careful independent investigation of the property to determine that it is suitable to your needs.